

# Style PG1250: Premium-Grade Fiberglass Tape with PSA

**0 .125" Thick**

REVISED: SEPTEMBER 6, 2011

Base Material: Texturized E-Glass

---

Weave: Plain

---

Thickness: 0.125" (+/- 10%)

---

Width: 1/2" - 6" Standard

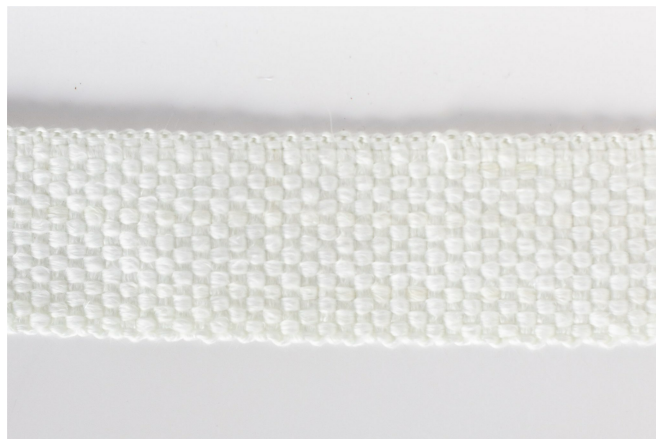
---

Roll Length: 100 ft

---

Service Temperature: 1000°F

---



## SPEC FOR PSA

Total Thickness (not including liner): 3.2 mil

---

Adhesive Thickness (liner side): 1.25 mil

---

Adhesive Thickness (exposed side): 1.45 mil

---

Carrier Thickness (polyester film): 0.5 mil

---

Release Liner Thickness (60# kraft): 3.5 mil

---

Adhesive Color: Clear Amber

---